



Biodiversiteit

Deltaplan Biodiversiteitsherstel



ABN·AMRO



SAMEN VOOR
BIODIVERSITEIT

Even voorstellen!



Sonny Duijn
Adviseur biodiversiteit

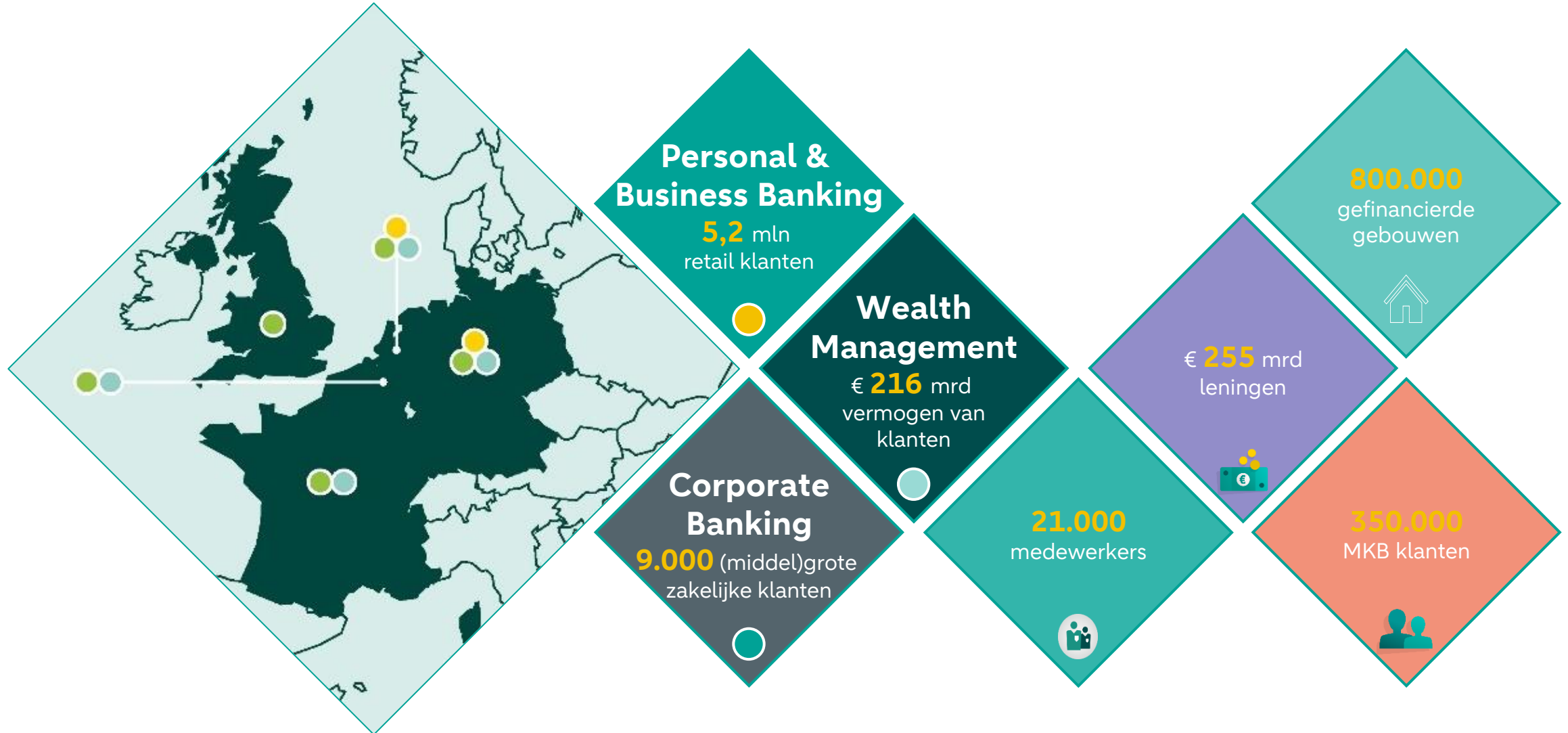


Julie Kiveron
Analist circulaire economie & biodiversiteit



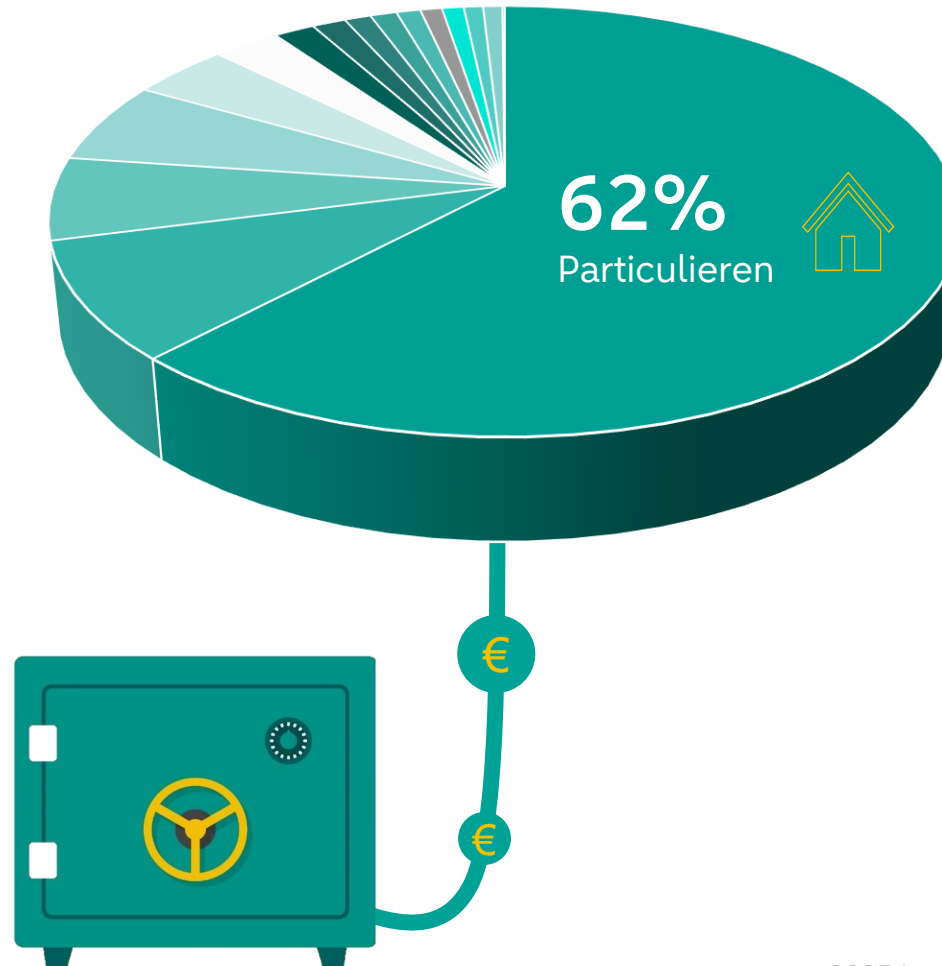
Elias Colemont
Analist circulaire economie & biodiversiteit

ABN AMRO in een oogopslag



Wat financiert ABN AMRO?

Particuliere leningen	62,0%
Financiële dienstverlening	8,9%
Commercieel vastgoed	6,2%
Industriële producten & diensten	6,1%
Levensmiddelen	4,1%
Overig	2,8%
Detailhandel	1,7%
Zorg	1,4%
Reizen & vrije tijd	1,1%
Nutsvoorzieningen	1,1%
Bouw & materialen	1,0%
Banken	0,9%
Technologie	0,9%
Olie & gas	0,8%
Auto's & onderdelen	0,8%
Overheden	0,1%



**EUR 255 miljard
aan leningen op
onze balans**

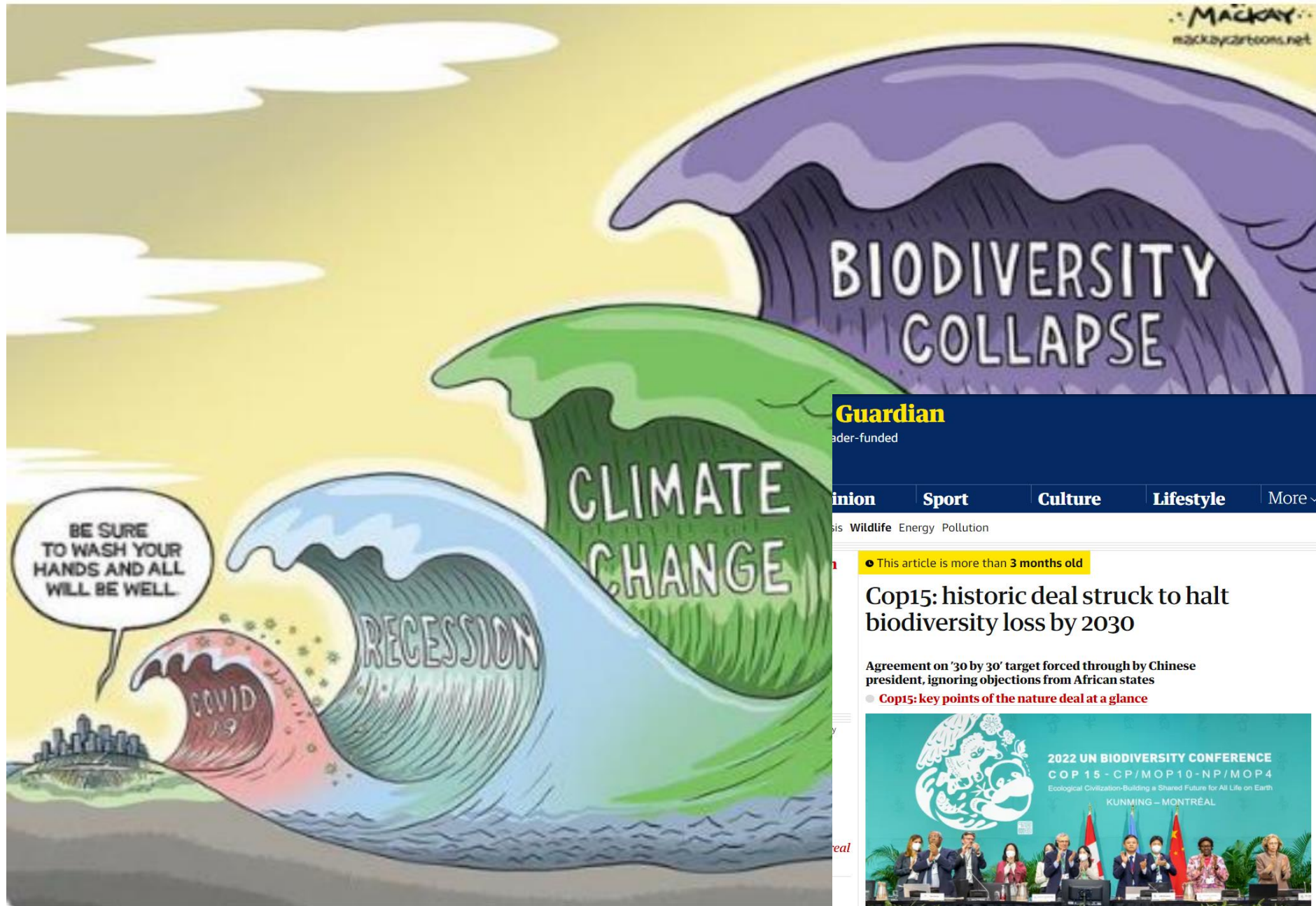
Waarvan bijna 160 miljard aan particuliere leningen, voornamelijk hypotheekleningen. Het grootste deel van de financieringen van ABN AMRO gaat naar vastgoed.



Stelling 1:

“Biodiversiteit is een zeer relevant onderwerp voor een bank als ABN AMRO”

- A. Zeer eens
- B. Eens
- C. Neutraal
- D. Oneens
- E. Zeer oneens



Guardian

ader-funded

The Guardian

inion Sport Culture Lifestyle More ▾

is Wildlife Energy Pollution

• This article is more than 3 months old




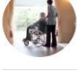

Cop15: historic deal struck to halt biodiversity loss by 2030

Agreement on '30 by 30' target forced through by Chinese president, ignoring objections from African states

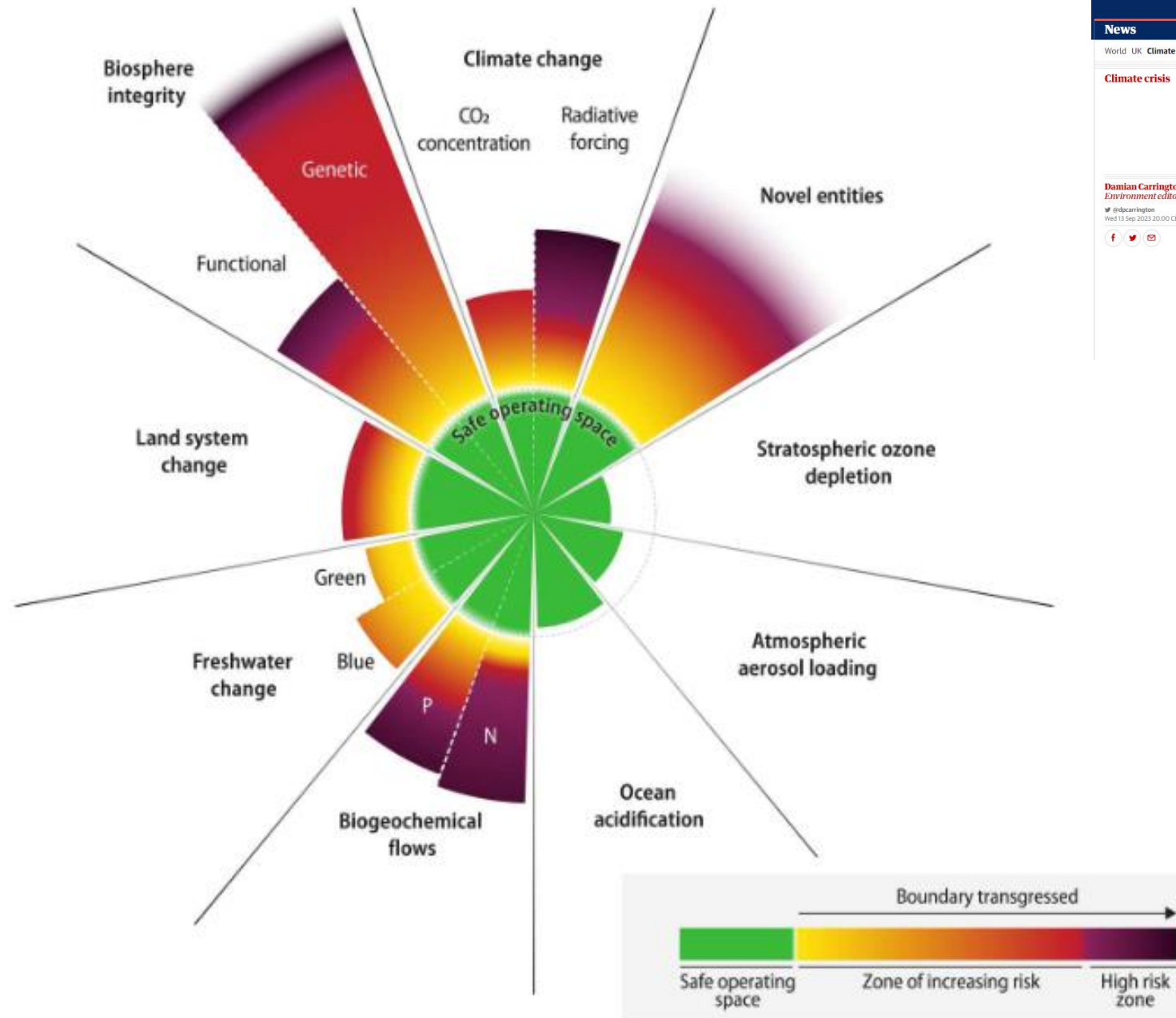
• [Cop15: key points of the nature deal at a glance](#)



Most viewed

- 
Live Russia-Ukraine war live: Kyiv's forces in 'unprecedented' bloody battles in Bakhmut
- 
Former MP and his brother shot dead on live TV in India
- 
Gaunt and ghostly, Georgia's jailed ex-president nears death in hospital
- 
Is it fair to put my abusive, elderly father into a home?
- 
When Macron met Xi: welcome to the new world disorder





Support the Guardian
Fund independent journalism with €5 per month
[Support us →](#)

The Guardian

News Opinion Sport Culture Lifestyle More >

World UK Climate crisis Ukraine Environment Science Global development Football Tech Business Obituaries

Climate crisis

This article is more than 4 months old

Earth 'well outside safe operating space for humanity', scientists find

First complete 'scientific health check' shows most global systems beyond stable range in which modern civilisation emerged

Damian Carrington
Environment editor
@dpcarrington
Wed 13 Sep 2023 20:00 CEST

[f](#) [t](#) [e](#)

Advertisement
Meda's/Moist
Bestial outfit of the day
Lingerie price in 30 days
332.2

Een gevaarlijk spel



Natuur

- De populaties wilde dieren zijn sinds 1970 gemiddeld met 73% afgenomen, wat een voorbode kan zijn van meer biodiversiteitsverlies
- Een miljoen plant- en diersoorten worden met uitsterven bedreigd
- Verlies van biodiversiteit en de instorting van ecosystemen is het op twee na grootste ernstige wereldwijde Risico over een periode van 10 jaar, volgens het WEF-Global Risks rapport van 2024



Financiële Afhankelijkheid

- Meer dan de helft van de totale wereldeconomie is matig of sterk afhankelijk van natuurdiensten
- Volgens DNB heeft 36% van de portefeuilles van Nederlandse financiële instellingen een hoge of zeer hoge afhankelijkheid van één of meerdere ecosysteemdiensten

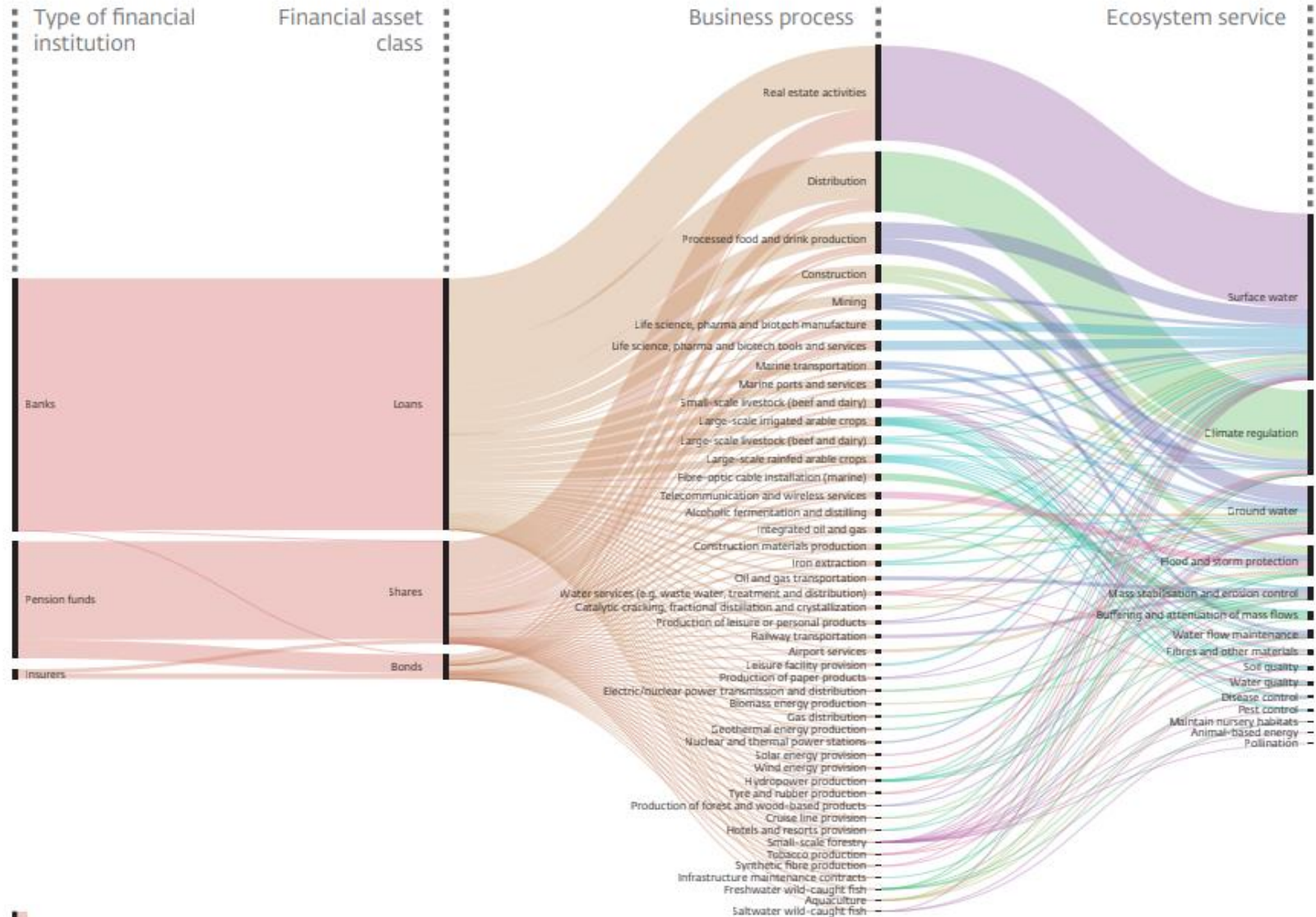


Regelgeving

- De Europese Commissie heeft CSRD geïntroduceerd, die steeds meer bedrijven verplicht om te rapporteren over biodiversiteitsverlies
- De Natuurherstelwet eist dat er in 30 procent van de Nederlandse natuurgebieden in 2030 herstelmaatregelen moeten zijn genomen

Figure 3 The financial sector and ecosystem services dependencies per euro invested*

EUR billion



EUR 100 billion

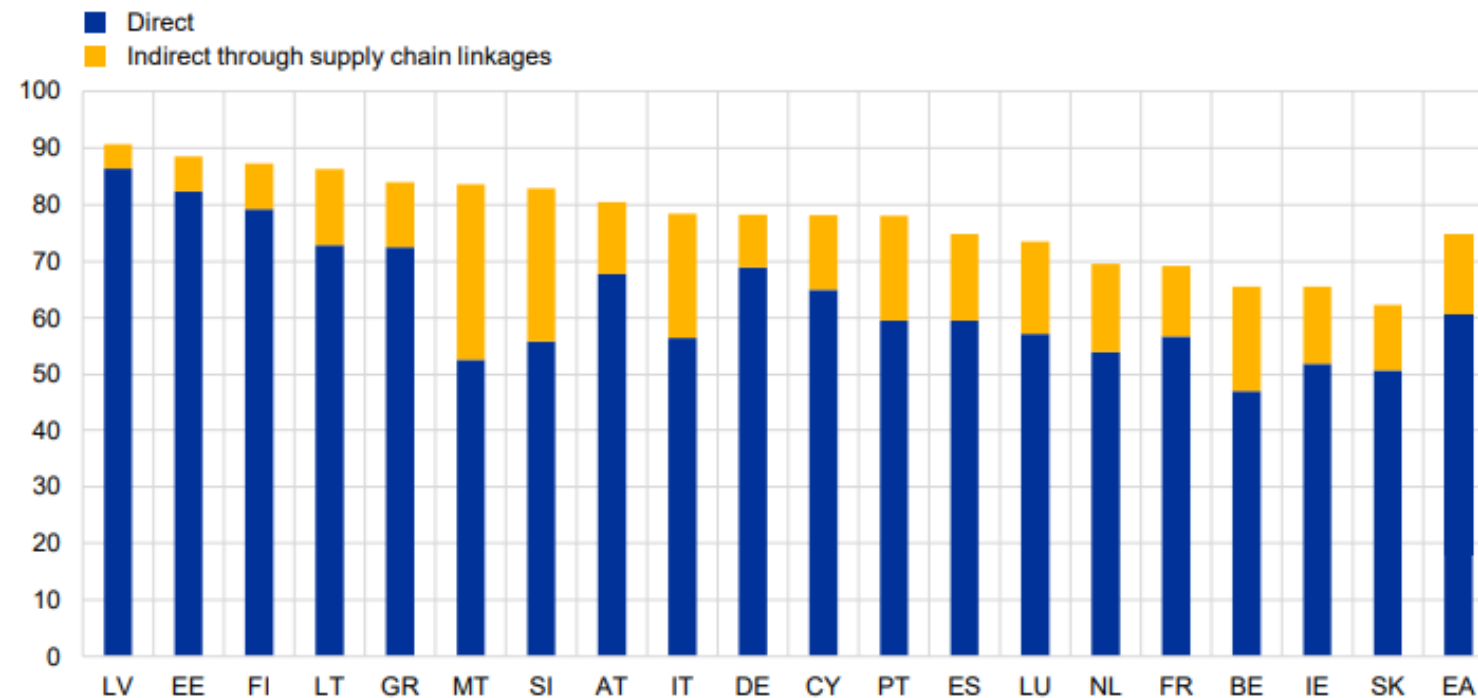
Sources: ENCORE, DNB

Chart 10

Dependency of euro area banks on ecosystem services

Share of corporate loans from banks to NFCs with a high dependency score (greater than 0.7) for at least one ecosystem service. Loans are allocated to the country where the headquarters of the bank are located

(Dec. 2021, y-axis: percentages; share of loans with high dependency)



Sources: EXIOBASE, ENCORE, AnaCredit and ECB calculations.

Notes: Share of loans with a high dependency score (greater than 0.7) for at least one ecosystem service. A loan is labelled as highly dependent when the borrowing NFC has a sufficiently high direct dependency score (blue bar) or sufficiently high dependency when also considering possible supply chain linkages (yellow bar).

“Core economics”

FINANCIAL TIMES

HOME WORLD US COMPANIES TECH MARKETS CLIMATE OPINION WORK & CAREERS LIFE & ARTS HTSI

European Central Bank + Add to myFT

ECB flags stark economic risks from biodiversity loss

Board member Frank Elderson warns that destroying nature will ‘destroy the economy’

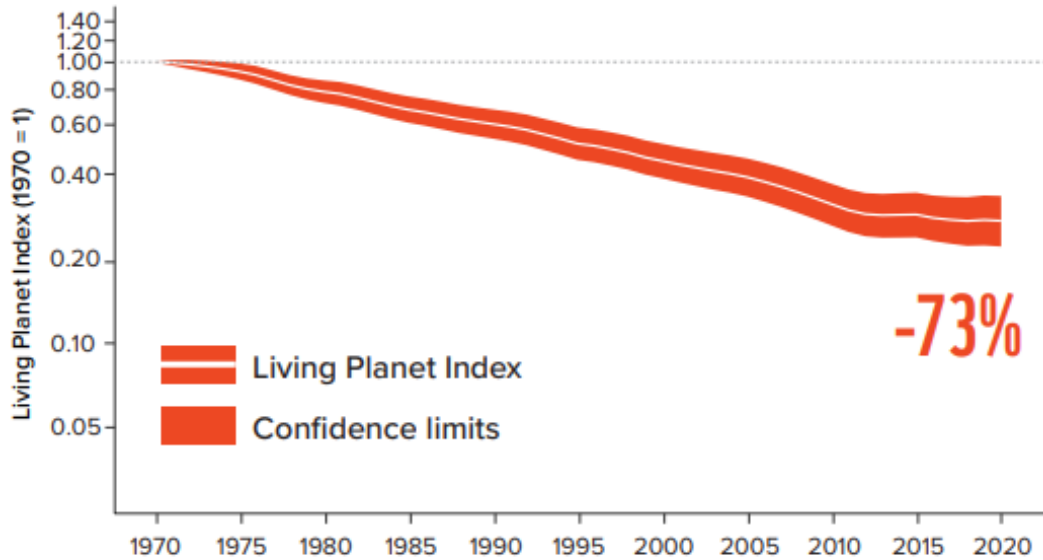


Save

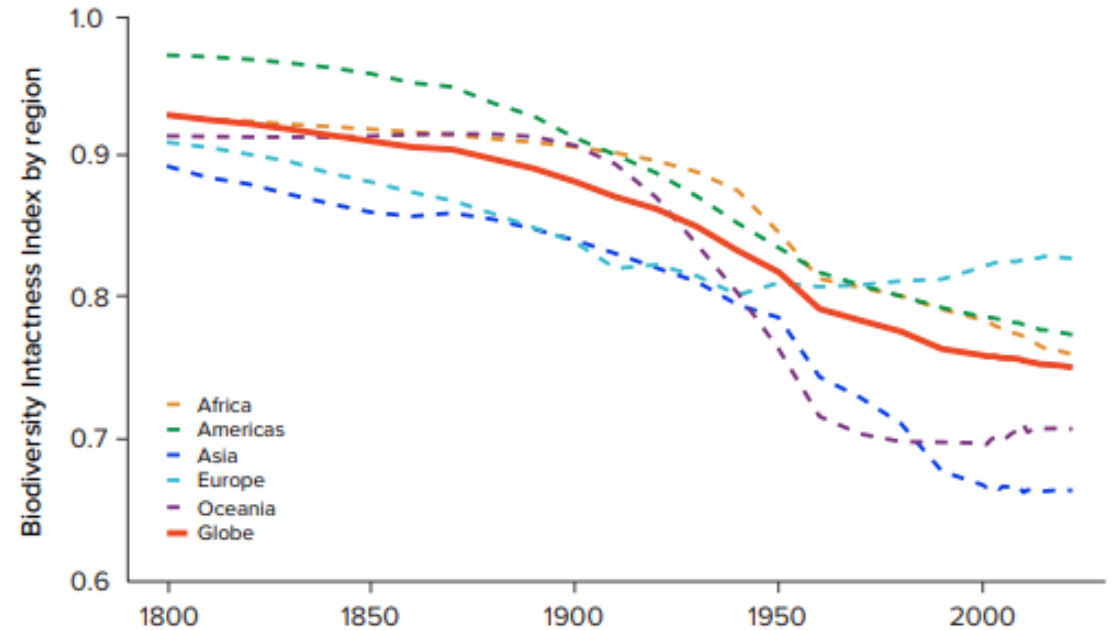


Ecosysteemdiensten | Ecopedia

Door krimp populaties dreigt verdere verzwakking ecosystemen



a. Global Living Planet Index



c. Biodiversity Intactness Index

2. ABN AMRO en biodiversiteit

Focusthema's duurzaamheid



KLIMAATVERANDERING



**CIRCULAIRE
ECONOMIE &
BIODIVERSITEIT**



SOCIALE IMPACT

Nature Statement



Nature Statement

Augustus 2024

Bij ABN AMRO zijn we vastbesloten om onze invloed als financier, aanbieder van beleggingsdiensten, klantadviseur, vermogensbeheerder, investeerder en werkgever in te zetten en te versterken om de **negatieve impact op de natuur te verminderen** en de **positieve impact te vergroten**. Zo willen we eraan bijdragen dat biodiversiteitsverlies voor 2030 een halt wordt toegeroepen en wordt teruggedraaid. ABN AMRO steunt het **Kunming-Montreal Global Biodiversity Framework (GBF)**.

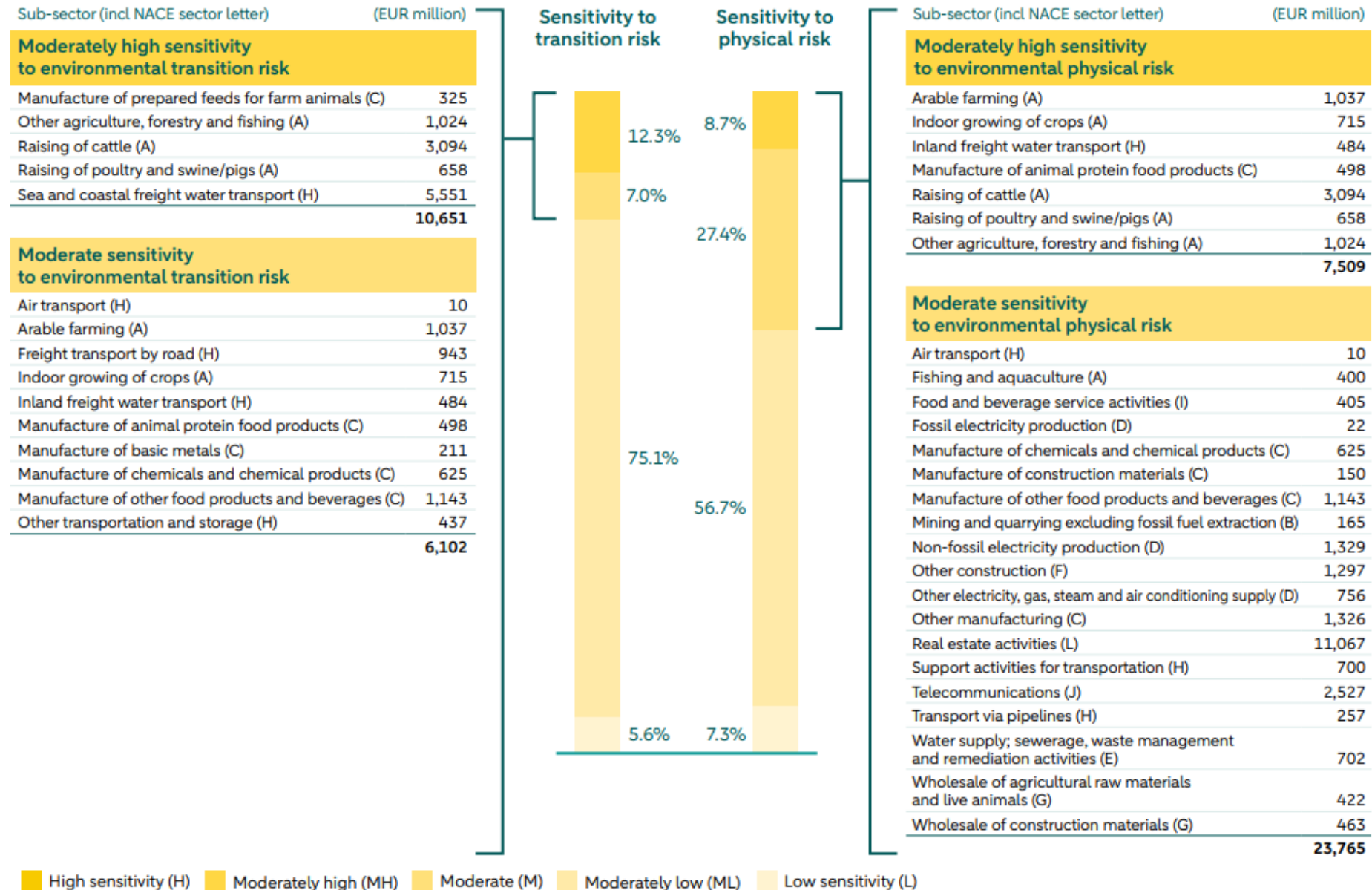
Principes van de Nature Statement

1. Natuur in onze kernactiviteiten integreren
2. Geïntegreerde transitieplannen
3. Sector- en locatiegebonden informatie
4. Effectieve klantdialogoog
5. Toepassing van de mitigatie-hiërarchie
6. Transparantie



1 *Natuur in onze kernactiviteiten* integreren

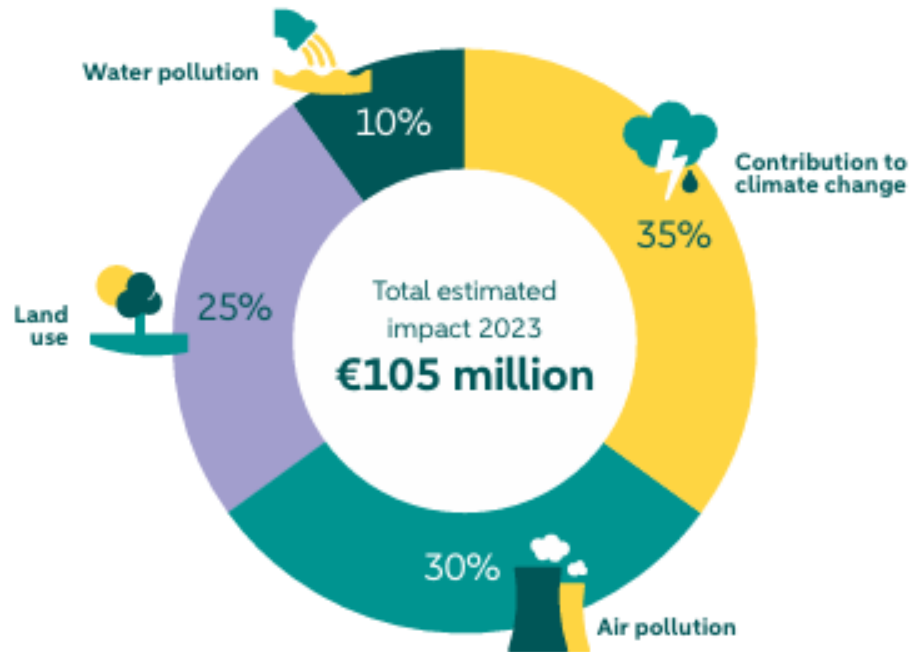
Environmental Risk Heatmap¹



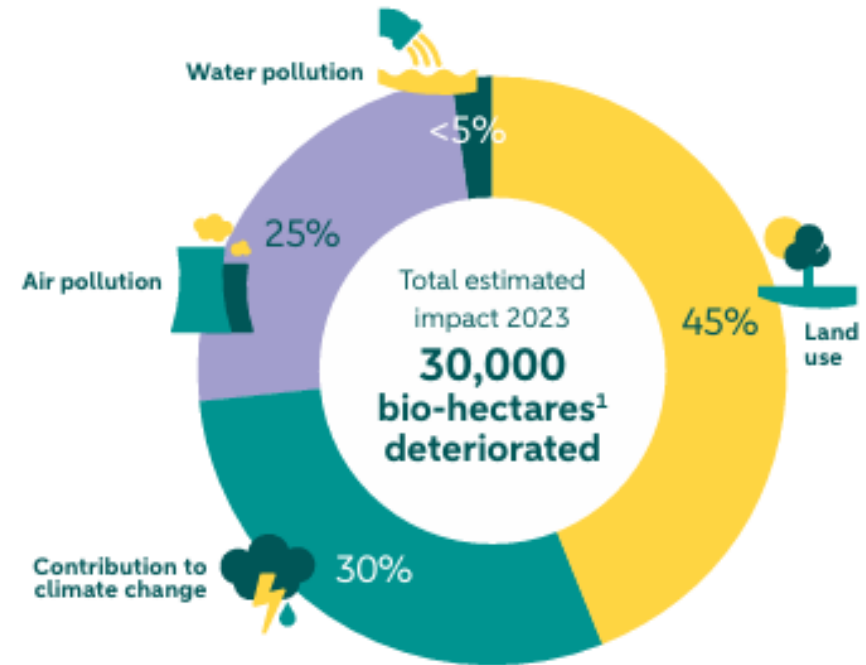
¹ Some sub-sectors deviate from NACE. This is due to the fact that for some sub-sectors NACE classification was not useful for sector experts to provide relevant input about the sub-sector characteristics.

Voorbeeld uit impactrapportage

Total monetised biodiversity impact per driver



Total footprint biodiversity impact per driver



Kennis opdoen en delen over biodiversiteit

Circle
Biodiversiteit



Voorbeelden partnerships/deelname



Biodiversity Working Group

Read aloud

Biodiversity loss requires rapid action from the financial sector, which must step up its financing and investment in the conservation and restoration of biodiversity. 12 Dutch financial institutions and 2 societal organisations have joined forces in the Biodiversity Working Group.



Finance *for*
Biodiversity
Pledge



PARTNER DELTAPLAN

2

Geïntegreerde transitieplannen

Geïntegreerde transitieplannen

ABN AMRO werkt aan samenhangende transitieplannen voor kredietklanten op het gebied van:



Klimaat



Natuur



Mensenrechten



Circulaire Economie

3

Sector- en locatiegebonden informatie

Sector en locatiegebonden informatie

Prioriteren van initiatieven met klanten op basis van de verwachte impact van hun bedrijf. Daarbij maken we gebruik van onze sectorkennis en/of locatie-informatie.

Onze primaire focus ligt op:



Landbouwsector

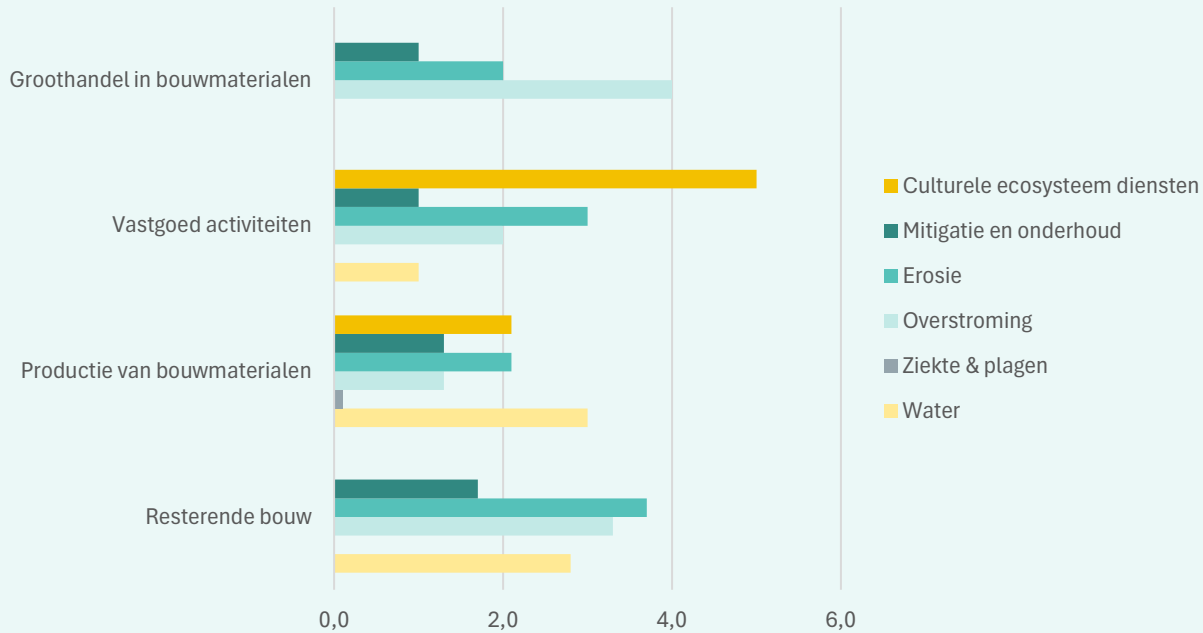


Bebouwde omgeving

Bebouwde omgeving

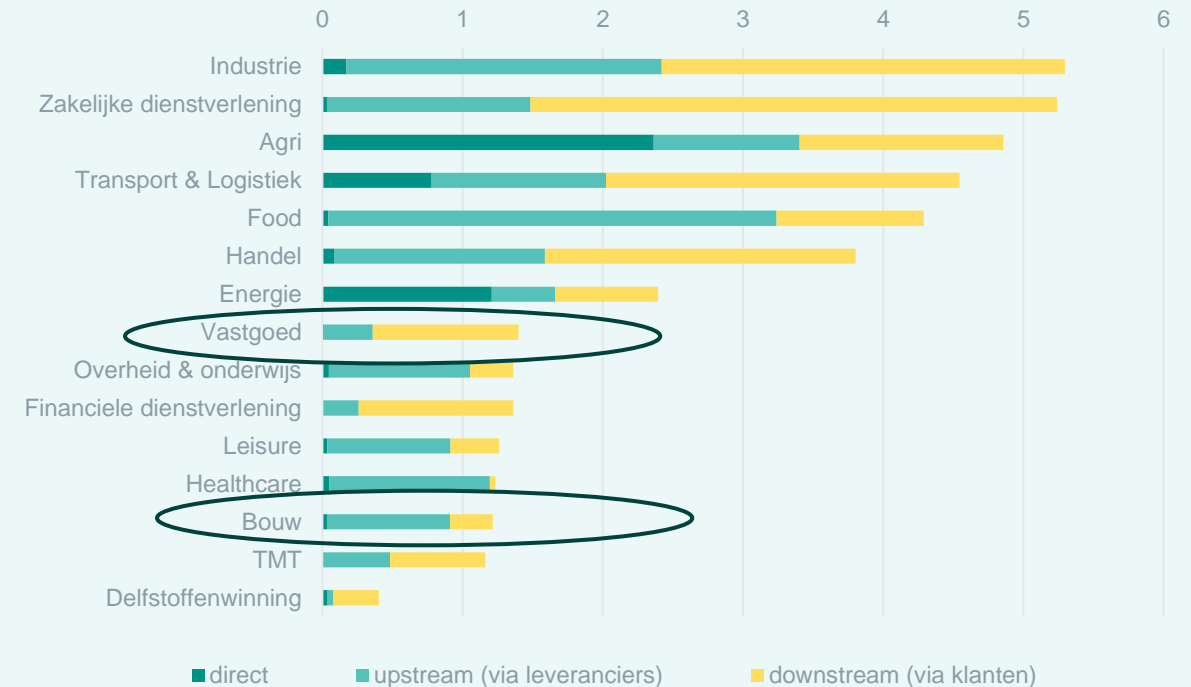
- Het grootste deel van onze kredietportefeuille houdt verband met de bebouwde omgeving, en:

Afhankelijkheid van ecosysteemdiensten



Encore data

Schade van bedrijfstakken aan biodiversiteit in NL (mld. euro's)



GID data

Verstening



Zoek op onderwerp of persoon

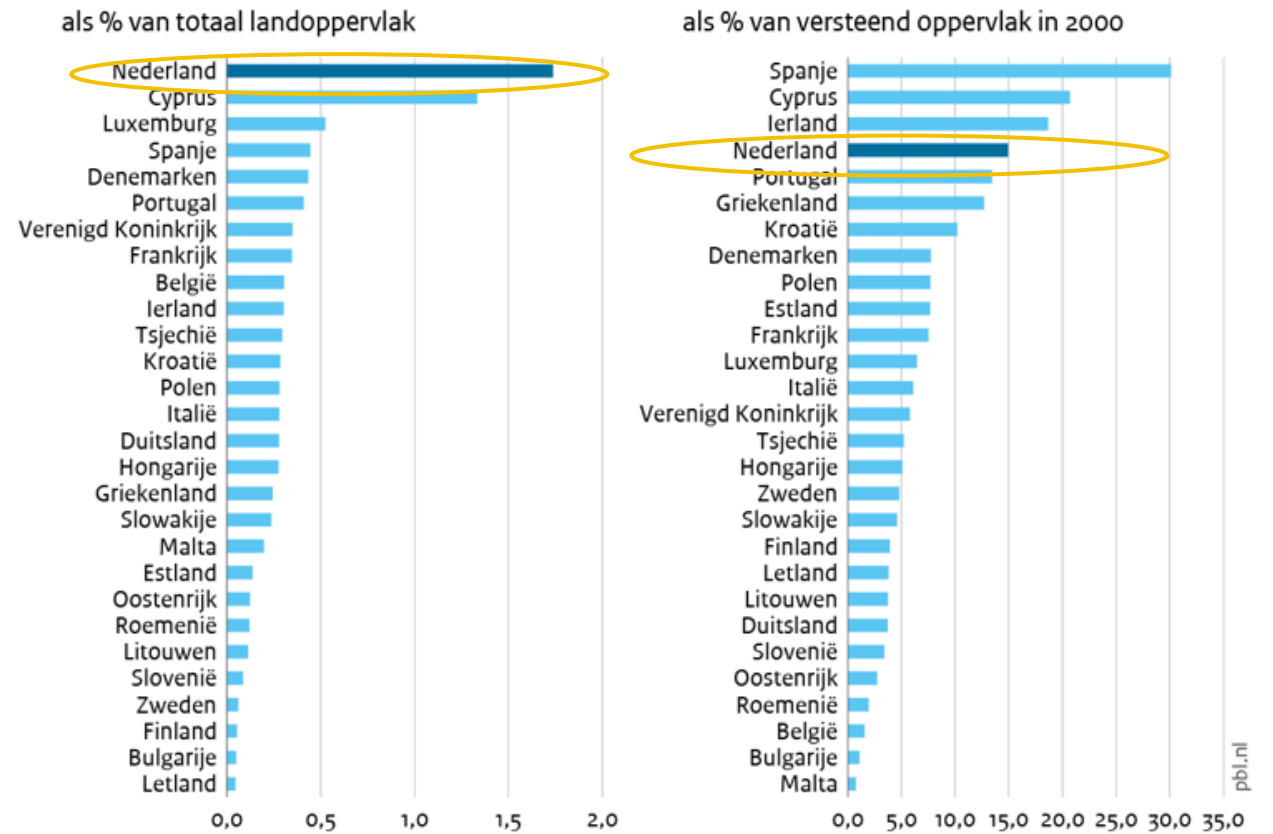
- Home
- Onderzoek
- Onderwijs
- Wetenschappers
- Over ons
- Samenwerking

Home > Nieuws > Geveltuintjes zijn cruciaal voor biodiversiteit in de stad



Geveltuintjes zijn cruciaal voor biodiversiteit in de stad

Verstening tussen 2000 en 2018



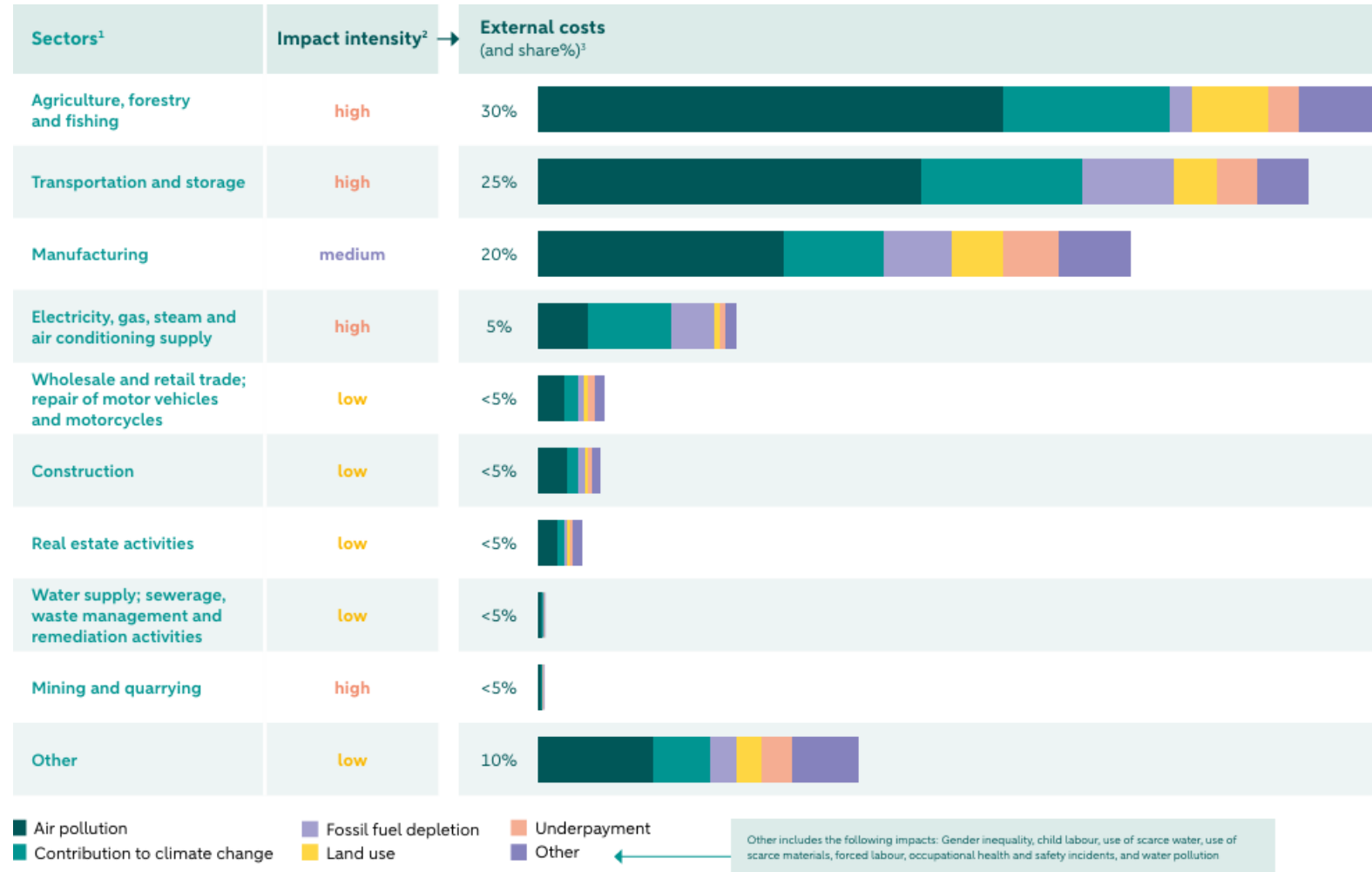
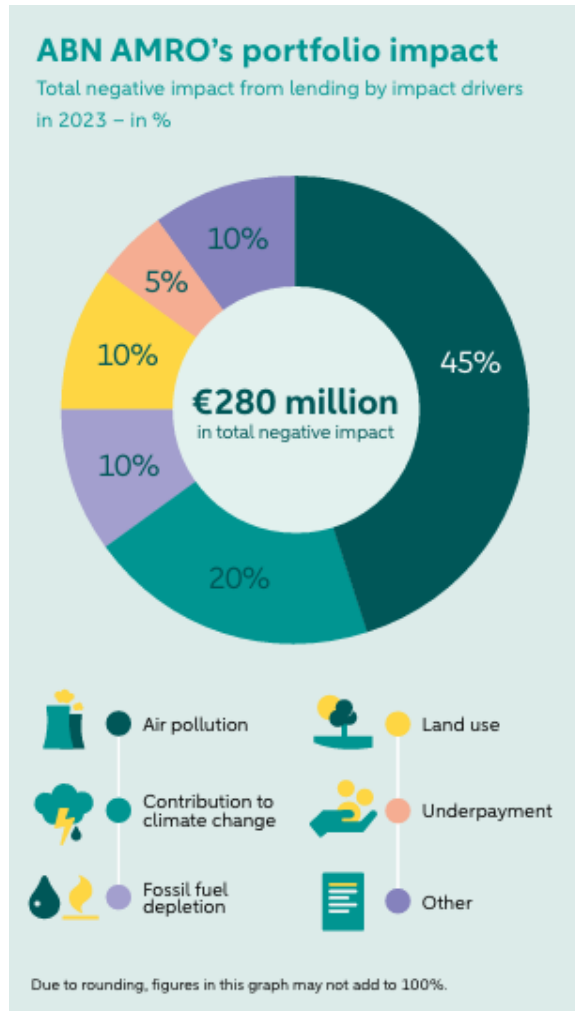
Bron: Corine Land Cover, ESPON

NB: Corine Land Cover registreert landbedekkings-eenheden vanaf een oppervlak van 25 ha. Kleinschalige ontwikkelingen zijn daardoor ondervertegenwoordigd in deze data.

Voordelen van biodiversiteit in een stedelijke omgeving zijn talrijk



Bredere impact van bedrijfsleningen



Slimme verzekering helpt gebruik pesticiden te verminderen

Sustainable banking 16 July 2024 • 02:00



Nieuwsbrief duurzaam bankieren

[Delen](#)



Bron: WWF Frankrijk



Environmental heatmaps

High level environmental risk heatmap for corporate loans (in millions)

Sector	Aggregated sensitivity to transition risk	Aggregated sensitivity to physical risk	31 December 2023	31 December 2022
			Gross carrying amount ³ (EUR million)	
A Agriculture, forestry and fishing	MH	MH	6,928	7,222
B Mining and quarrying	ML	L	1,729	2,536
C Manufacturing	ML	M	6,699	7,667
D Electricity, gas, steam and air conditioning supply	ML	M	2,107	1,585
E Water supply; sewerage, waste management and remediation activities	L	M	702	649
F Construction	ML	ML	3,623	4,078
G Wholesale and retail trade; repair of motor vehicles and motorcycles	ML	ML	8,778	9,151
H Transport and storage	MH	ML	8,833	9,491
L Real estate activities	ML	ML	11,067	12,755
Corporate loans in sectors highly contributing to climate change			50,466	55,135
Other sectors ¹			36,318	31,596
Corporate loans²			86,784	86,731

■ High sensitivity (H)
 ■ Moderately high (MH)
 ■ Moderate (M)
 ■ Moderately low (ML)
 ■ Low sensitivity (L)
 ■ Not specified

¹ Includes exposures to all other NACE sectors.

² Excluding loans at fair value through P&L.

³ Gross carrying amount excludes fair value adjustments from hedge accounting.

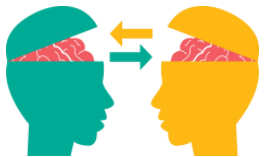
4 *Effectieve klantdialogoog*

Effectieve klantdialoog

Met de extra focus op belangrijke biodiversiteitssectoren en zakelijke kredietklanten, wil ABN AMRO de effectiviteit van bestaande klantbeoordelingen en gesprekken verbeteren:



Sectorspecifieke richtlijnen



Upskilling

Meenemen in periodieke klantbeoordelingen

Generic Principles

Generic principles define the minimum sustainability requirements for corporate clients operating in high(er) risk sectors.



Clients comply with applicable laws and regulations and are able to demonstrate transparency regarding their responsible business conduct.



Clients know the salient human rights risks of their own activities and business relationships and take measures to address these risks.



Clients have a satisfactory ESG track record.



Clients have identified potentially affected groups and other relevant stakeholders and engage with them constructively and openly in assessing and mitigating human rights risks and addressing any grievances.



Clients take measures to promote circularity and reduce the use of virgin material and waste (e.g. through design, recycling, life time extension), if applicable.



Clients monitor their GHG emissions and take measures to reduce them in line with the Paris climate goals.



Clients are aware of how their business model depends on ecosystem services (i.e. resources, pollination) and take measures to preserve these services.



Clients are aware what the transition to a Net Zero economy means for their business model and take appropriate measures to prepare for the transition.



Clients are aware what their impact is on biodiversity, water, air and soil and take appropriate measures to prevent biodiversity loss and pollution.



Clients are aware of the physical risks of a changing climate for their business model and take appropriate measures to mitigate these risks.

Sectorale instructies



5

Toepassen van de mitigatie-hierarchie

Uitsluitingslijst

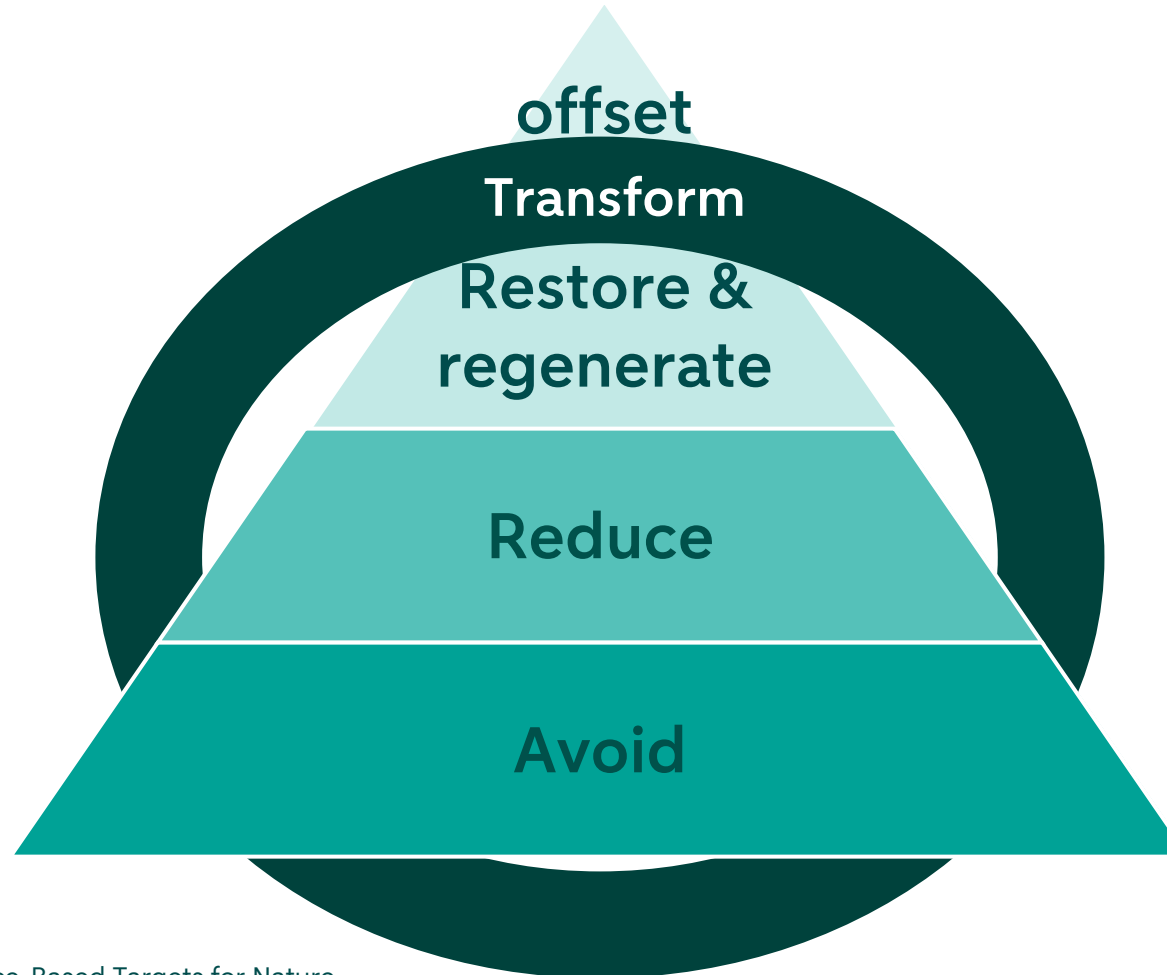
Sectors	Activities
General Exclusions	Trading of plant or animal species, or products thereof, in violation of CITES
	Activities causing adverse human rights impacts
	Activities resulting in the infringement of the rights of indigenous and/or vulnerable groups without their Free Prior and Informed Consent (FPIC)
	Activities resulting in conversion or degradation of protected areas or critical habitats
Agriculture & Forestry	Producing, processing and/or trading of palm oil by companies that are not a member of- or in the process of becoming a member of- the Round Table for Sustainable Palm Oil (RSPO)
	Deforestation or the burning of natural ecosystems for the purpose of land clearance relating to the establishment of large scale agricultural plantations
	Illegal logging or trading in illegally harvested or uncertified timber
Animal Protein	Large-scale ruminant farming (over 500,000 heads).
Animal welfare	Commercial animal testing or health care related animal testing which is non compliant with EU or US legislation.
	Using endangered species or great apes for testing and experimental purposes.
	Producing, processing and/or trading fur
	Producing, processing and/or trading Angora wool
	Commercial events with animals where the Five Animal Freedoms are not respected
Chemicals & Substances	Activities non-compliant with the EU regulation on the Registration, Evaluation, Authorization and Restriction of Chemicals (REACH)
	Producing, trading and/or using unbounded asbestos fibres
	Producing and/or trading pharmaceuticals, pesticides, herbicides, chemicals and ozone depleting substances subject to international phase outs or bans
	Activities violating the Basel Convention on the Control of Transboundary Movements of Hazardous Wastes and their Disposal

Uitsluitingslijst

Sectors	Activities
Defence	Producing, selling and/or distributing controversial weapons and/or elements of the core weapon system. The following weapons are considered controversial: Cluster weapons, nuclear weapons, depleted uranium weapons, anti-personnel mines, biological weapons, chemical weapons, white phosphorus weapons and fully autonomous weapons
	Providing private security services in countries that are defence-sensitive ¹² without the company being member of the International Code of Conduct Association (ICOCA).
	Selling small arms and light weapons (SALW) to private sector in countries without gun control laws or countries that are defence-sensitive
Employment Agencies	Providing employment agency services by agencies that are not certified - or in the process of becoming certified - by the Stichting Normering Arbeid (SNA) and – if they provide housing to migrant workers – the Stichting Normering Flexwonen (SNF). Employment agencies that do not operate on the Dutch market should provide evidence that they comply with the same material standards.
Energy	Oil/gas exploration and production activities in the Arctic region, as well as supporting services dedicated to these activities.
	Exploration and processing of tar sand, the transportation of tar sand oil and the construction of pipelines dedicated to tar sand oil.
	Stand-alone project finance of nuclear power plants
Mining	New coal-fired power plants
	Mountaintop removal
	Commercial large scale deep sea mining beyond exclusive economic zones.
	Mining and/or trading rough diamonds which are not certified according to the Kimberley Process
	Acquisition or building of thermal coal mines
Tobacco	Growing of tobacco and manufacturing of tobacco products, as well as trading and wholesale when revenues from these trading and wholesale activities exceed 50% of the consolidated turnover.
Transportation	Unsustainable ship recycling facilities or the purchasers of shipping assets intended for unsustainable ship recycling
	Beaching activities non-compliant with the Hong Kong Ship Recycling Convention
	Shipping oil or other hazardous substances in single hull tankers or tankers not compliant with IMO requirements

Toepassen van de mitigatie-hiërarchie

De natuuracties van ABN AMRO geven prioriteit aan de eerste twee stappen: 'Avoid' & 'Reduce'



6

Transparantie

Transparantie

ABN AMRO maakt afhankelijkheden en de impact van haar activiteiten op de natuur openbaar, in lijn met de relevante standaarden van de CSRD. We beschouwen biodiversiteit en ecosystemen als een materieel onderwerp voor ABN AMRO.

ESRS topic	Impact materiality	Financial materiality	Link to sustainability pillar
Climate change	Material	Material	Climate change
Pollution ¹	Material	Material	
Water and marine resources	Not material	Not material	
Biodiversity and ecosystems	Material	Not material	Circular economy and biodiversity
Circular economy	Material	Not material	Circular economy and biodiversity
Own workforce	Material	Not material	Social Impact
Workers In the value chain	Material	Not material	Social Impact
Affected communities	Not material	Not material	
Consumers and end-users ²	Material	Material	Social Impact
Business conduct ³	Not material	Material	

¹ Pollution was newly added as material matter under ESRS and we aim to further explain how this relates to our strategic framework in the future.

² Consumers and end-users also includes client data protection, which falls under our customer experience pillar.

³ Business conduct includes anti-money laundering, which falls under our future-proof bank pillar.



CLIMATE
CHANGE

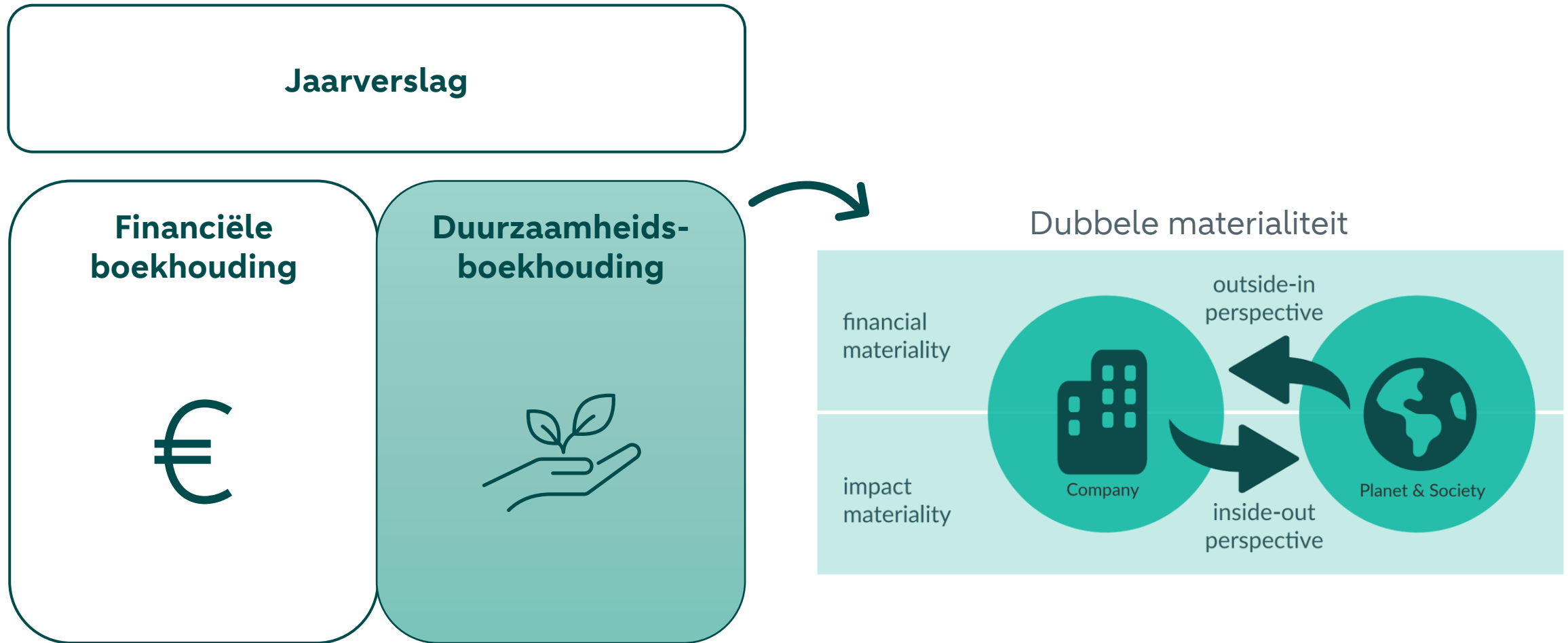


CIRCULAR
ECONOMY &
BIODIVERSITY

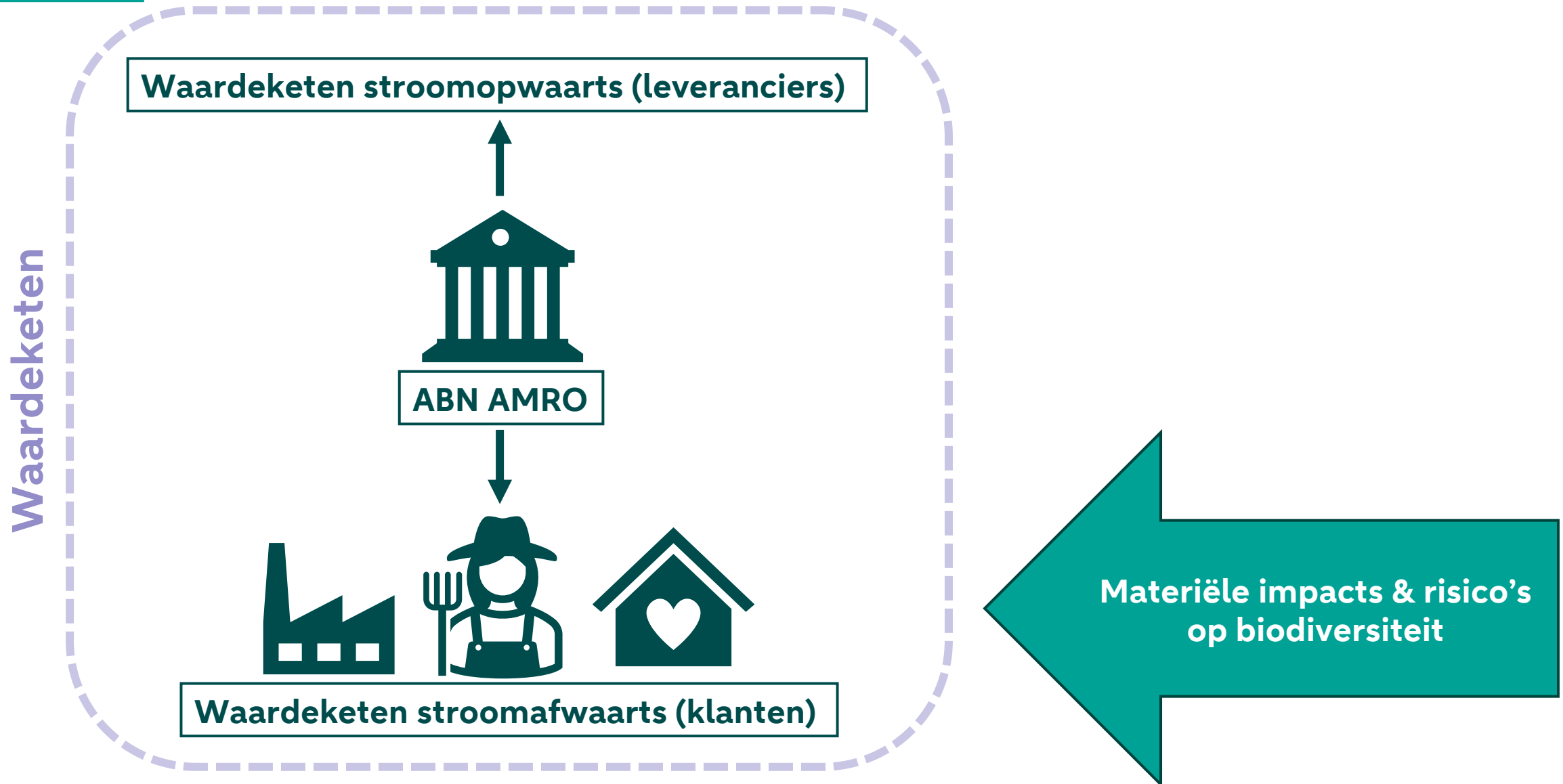


SOCIAL
IMPACT

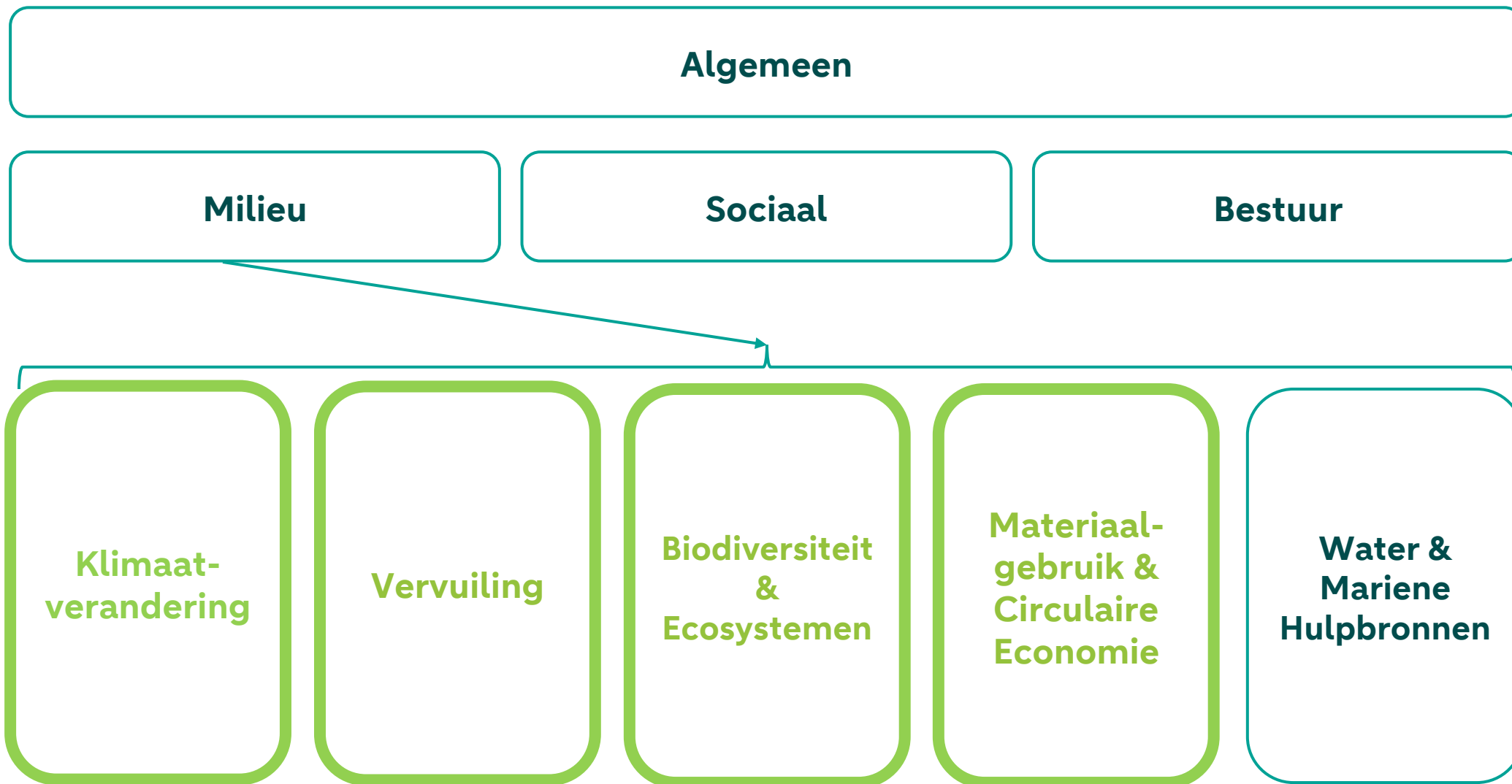
Duurzaamheidsboekhouding onder de CSRD



ABN AMRO's impacts en risico's zitten voornamelijk in haar waardeketen



CSRD introduceert rapportagestandaarden



ABN AMRO's Dubbele Materialiteitsanalyse

**Biodiversiteit &
ecosystemen**

IMPACT

**Klimaat-
verandering**

IMPACT + RISICO

**Materiaalgebruik
en circulaire
economie**

IMPACT

Vervuiling

IMPACT + RISICO

Dubbele Materialiteitsanalyse:

Impacts:

1. Schaal (sectorale blootstelling)
2. Scope (geografische blootstelling)
3. Omkeerbaarheid van impact
4. Waarschijnlijkheid van impact

Risico's:

Potentiële financiële effecten.

Hoe verhoudt ABN AMRO zich tot de CSRD bouwblokken?

Strategie & Bestuur

Impact & Risico Management

Metrics & Targets

Beleid

Acties

Praktijkdoelen

Impactdoelen

Voorbeelden uitdagingen

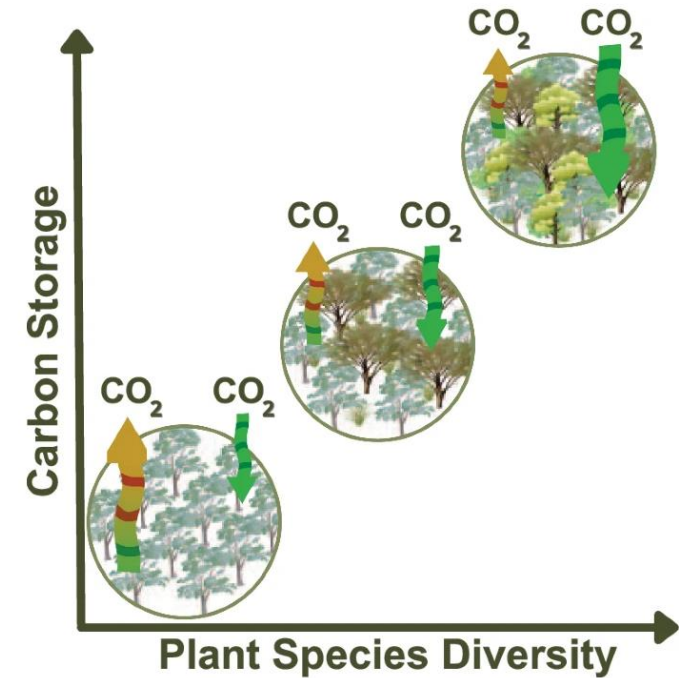
Link tussen klimaatverandering en biodiversiteitsverlies

Klimaatverandering veroorzaakt biodiversiteitsverlies



Biodiversiteitsverlies vermindert de veerkracht tegen klimaatverandering

Fig. 5: Relationship between plant diversity carbon storage.



Bron: [Biodiversity loss reduces global terrestrial carbon storage \(Nature\)](#)

Support the Guardian Fund independent journalism with €12 per month [Support us →](#) [Print subscriptions](#) [Search jobs](#) [Sign in](#)

News Opinion Sport Culture Lifestyle **The Guardian** Eur ▾

World US elections 2024 UK **Climate crisis** Ukraine Environment Science Global development Football Tech Business Obituaries

The age of extinction
Oceans

Trees and land absorbed almost no CO₂ last year. Is nature's carbon sink failing?

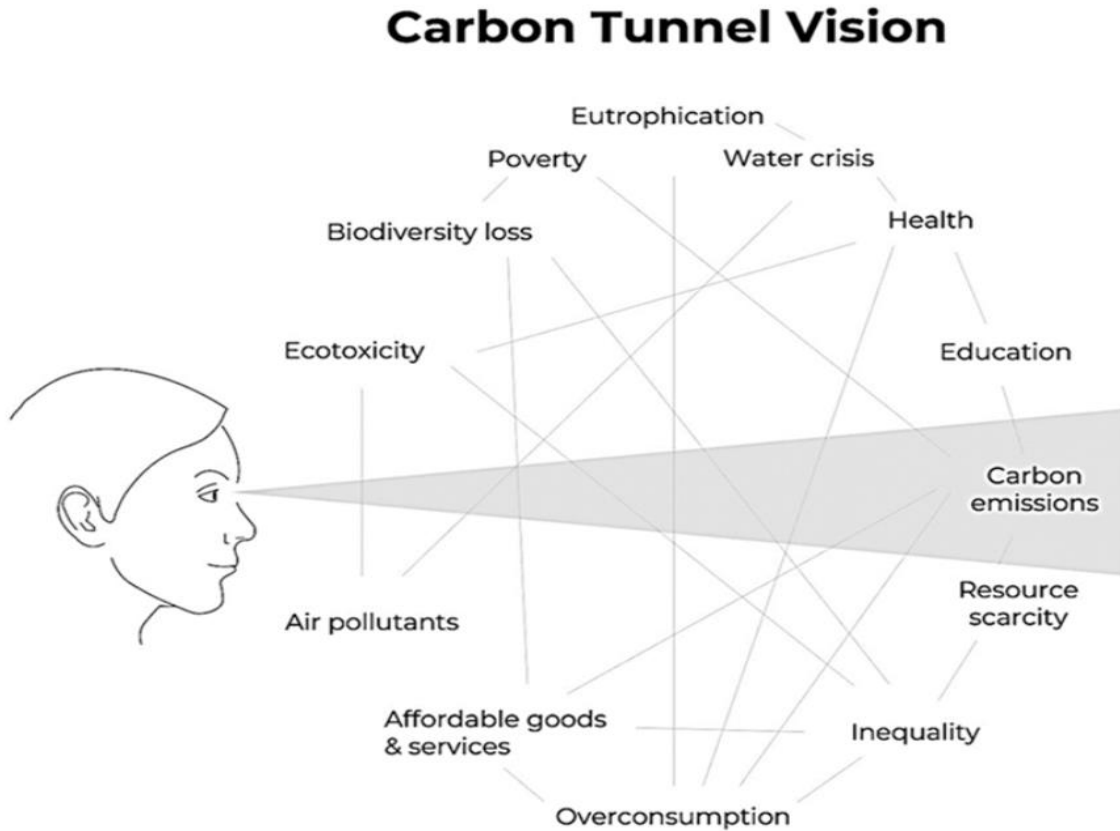
The sudden collapse of carbon sinks was not factored into climate models - and could rapidly accelerate global heating
Read more: [What happens to the world if forests stop absorbing carbon? Ask Finland](#)

Advertisement

Nog niet overgestapt?

92% kiest 1 jaar vast

Waken voor een tunnelvisie



Graphic by Jan Konietzko

Insert footer via the 'insert' tab

Sustainability transition

FINANCIAL TIMES

US COMPANIES TECH MARKETS CLIMATE OPINION WORK & CAREERS LIFE & ARTS HTSI

Deforestation [+ Add to myFT](#)

Nickel miners linked to devastation of Indonesian forests

Rising demand for electric vehicles and the batteries that power them leads to more trees being felled

Stelling 2:

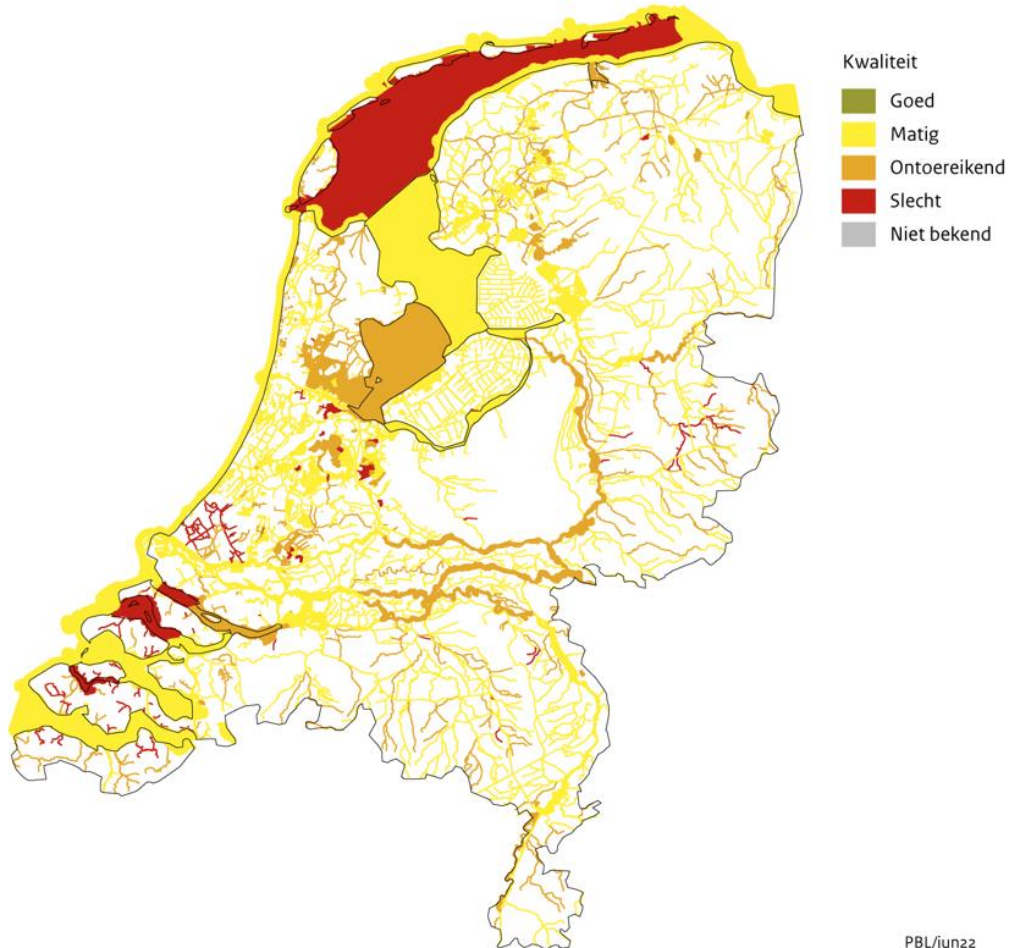
“De thema’s biodiversiteit en klimaatverandering zouden gezamenlijk (en dus niet separaat) aangepakt moeten worden”

- A. Zeer eens
- B. Eens
- C. Neutraal
- D. Oneens
- E. Zeer oneens

Wet- en regelgeving

Kaderrichtlijn Water (KRW)

Beoordeling ecologische kwaliteit, Kaderrichtlijn Water, 2021



Bron: IHW (waterschappen, RWS); bewerkt door PBL

PBL/jun22
www.clo.nl/nh143809

- **Ecologische waterkwaliteit is matig tot slecht** bijna overal in Nederland
- In **90%** van de waterlichamen is de **chemische waterkwaliteit** onvoldoende doordat één of meer stoffen de norm overschrijden

Belangrijkste oorzaken van de onvoldoende kwaliteit van Nederlands oppervlaktewater:

- Persistente stoffen waarvan de concentraties te hoog zijn door **emissies uit het verleden**
- Emissies van verschillende **giftige stoffen**, waaronder pesticiden
- **Eutrofiëring** met de voedingsstoffen stikstof en fosfor, wat algengroei veroorzaakt
- **Waterontwerp en -management**
- **Fragmentatie** door de aanwezigheid van gemalen en stuwen

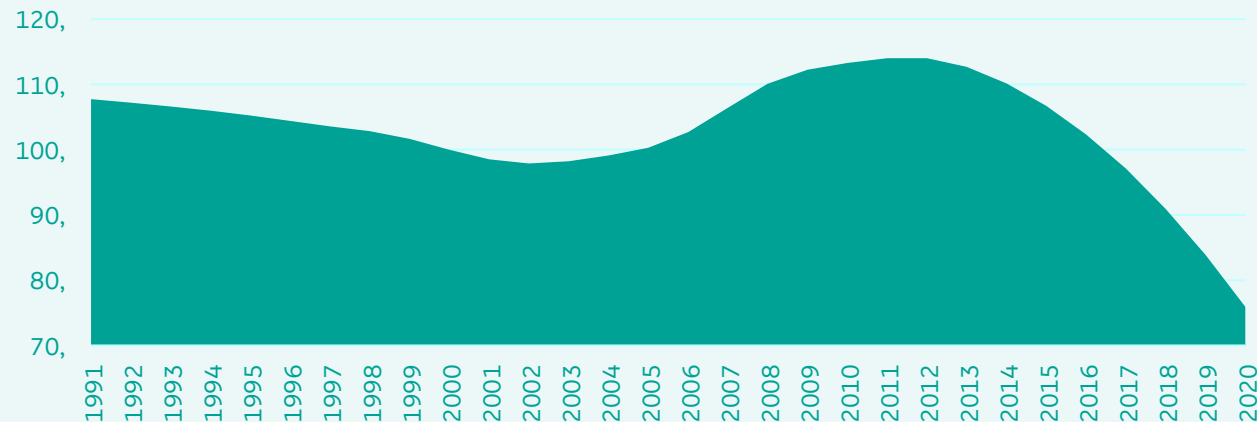
Natuurherstelwet



- 18 August 2024 Nature Restoration Law enters into force
 - 17 June 2024 Council adopts Nature Restoration Law
[See Council web page](#) and [Regulation text](#)
 - 27 February 2024 European Parliament agrees final text for Nature Restoration Law
 - 20 May 2020 Publication of the EU biodiversity strategy for 2030
- [Show 4 more items](#)

- EU-landen moeten ten minste **30%** van de aangetaste gebieden die onder de nieuwe wet vallen in **goede staat herstellen** tegen 2030, 60% tegen 2040 en 90% tegen 2050.
- Versterkt de geloofwaardigheid van het **UN Kunming-Montreal Global Biodiversity Framework**
- Benadrukt en versterkt bestaande **regelgeving en acties** (NLPG, NNN, Aanvalsplan landschapselementen etc.)
- Herstel van **bossen en biodiversiteit** in landbouwhabitats
- Verbetering van de diversiteit van **bestuivers**

Almost 30% of grassland butterflies were lost since 1991



Retrieved from [Statistics | Eurostat \(europa.eu\)](#)

Vraag:

Welke rol heeft een bank met betrekking tot wet- en regelgeving die klanten raakt?

- A. Banken spelen daarbij niet of nauwelijks een rol
- B. Banken spelen daarbij een informerende rol
- C. Banken spelen daarbij een pro-actieve rol

Doelstellingen op biodiversiteit

Meetbaar maken van biodiversiteit

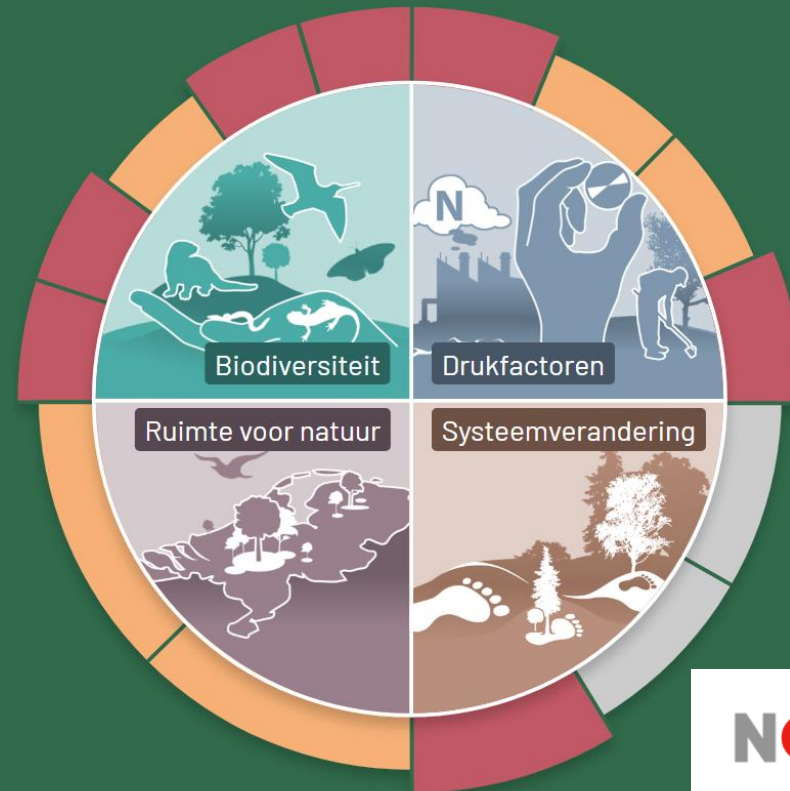
Kerngegevens biodiversiteit, op één plek samengebracht

Een effectieve aanpak van biodiversiteitsherstel begint met heldere afspraken en meetbare doelen.

[Bekijk de doelen >](#)

[Uitleg over het](#)

[Dashboard](#)



Nationale doelen →
vertaling naar het
bedrijfsleven

NOS

Nieuws ▾

Sport ▾

Live

Programma's

Stelling 3:

“Iedere organisatie zou een kwantitatief doel moeten hebben op het vlak van natuur”

- A. Zeer eens
- B. Eens
- C. Neutraal
- D. Oneens
- E. Zeer oneens

